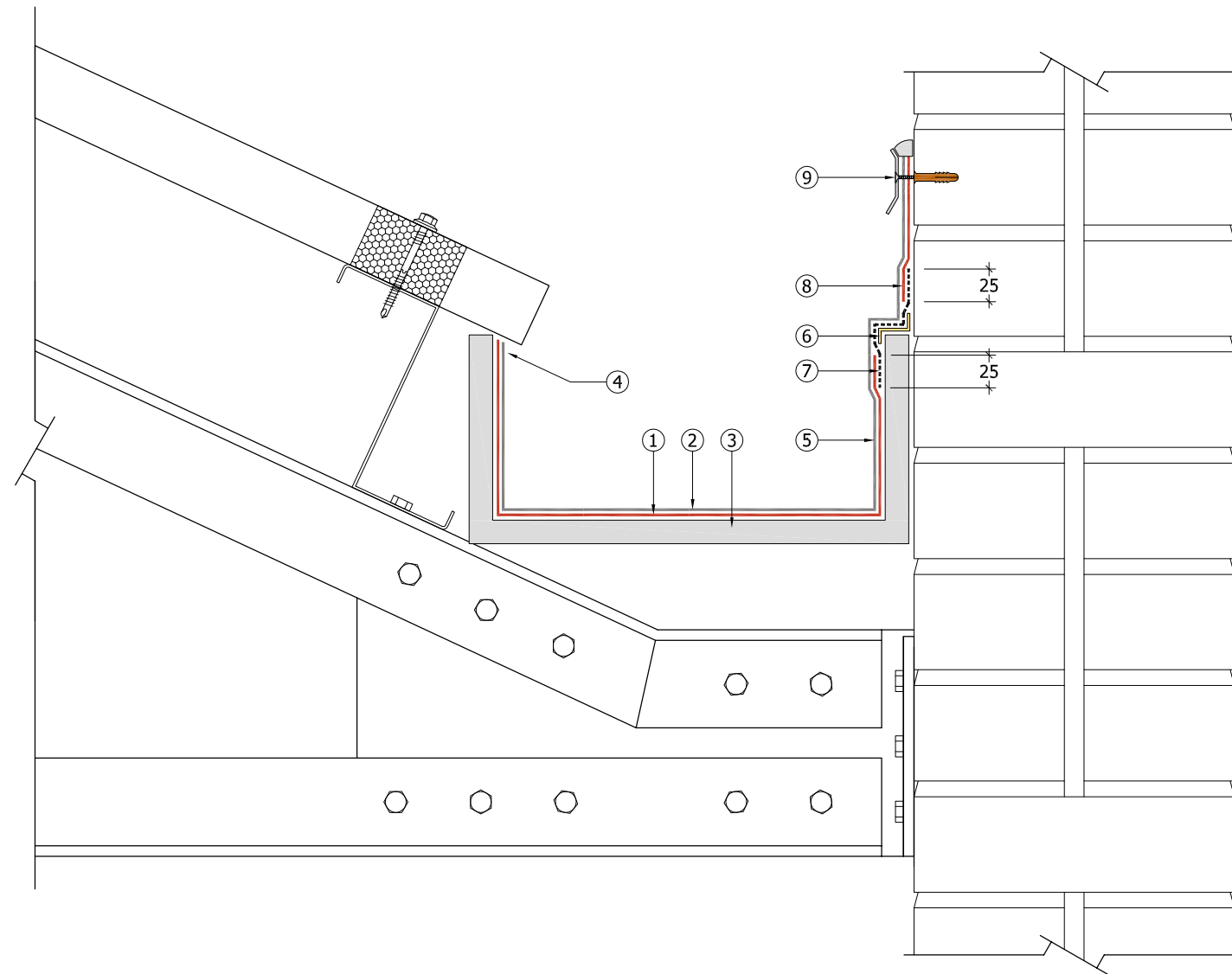


Key

- ① — Decothane Base Coat applied throughout all gutter areas; embedded with a continuous layer of Sika Reemat Premium
- ② — Decothane Top Coat/s applied in strict accordance with Sika Liquid Plastics Project Specification
- ③ Existing Metal Gutter/Coated Gutter Sheets/Composite Metal Sheets and associated components prepared and primed in strict accordance with Sika Liquid Plastics Project Specification
NOTE: Do not traffic roof sheets without taking all necessary Health and Safety precautions and always use the correct access equipment
- ④ Termination of the fully reinforced Decothane Waterproofing System must be in a protected position, for example beneath the existing eaves. Consideration must be given to the requirement for maintaining existing condensation drainage and/or natural ventilation beneath the underside of the existing roof sheets; do not obstruct condensation drip-trays or under-eaves ventilation when present
- ⑤ Fully reinforced Decothane Waterproofing System dressed on to prepared and appropriately primed upstands
- ⑥ — Suitable width low-tack bond break tape applied centrally to junctions between differing materials
- ⑦ - - - - - Stripe-coat of Decothane Base Coat, embedded with **150mm Sika Flexitape Heavy** applied centrally over bond break tapes; allow sufficient time for this to cure before applying the fully reinforced Decothane Base Coat
- ⑧ **25mm overlap** between 150mm Sika Flexitape Heavy embedded in Decothane Base Coat **and** Reemat Premium embedded in Decothane Base Coat
NOTE: The Sika Reemat Premium must not be applied continuously over the 150mm Sika Flexitape Heavy as this will impair the flexibility of the coating at the junction
- ⑨ Fully reinforced Decothane Waterproofing System terminated with a mechanically fixed Sika Liquid Plastics Termination Bar, bedded on and sealed with a continuous [minimum] 6mm bead of SikaHyflex-250 Facade sealant



Sika Liquid Plastics
 Sika House
 Miller Street
 Preston
 Lancashire PR1 1EA
 Telephone: 01772 259781
 Email: technical.customer.services@uk.sika.com
www.liquidplastics.co.uk

This drawing is solely intended to illustrate the correct application of Sika Liquid Plastics products and systems. It must be read in conjunction with the appropriate specification and current issue of relevant Product Data Sheets. All elements bearing reference to structural and/or thermal design are shown indicatively and **should not be used** in whole or in part for any aspect of project design without consulting the relevant authorities.

For refurbishment projects, all aspects of the existing roof are deemed to be fully compliant with BS 6229:2003 (Code of Practice for Flat Roofs with Continuously Supported Coverings) or improved upon for instances where these standards are not met.

Site-specific details not covered by our standard range can be obtained by providing relevant information to the email address shown.

Project N ^o	
DWG N ^o	Revision
Project:	
Drawing Title: Waterproofing Termination to an adjacent masonry upstand using a Termination Bar	
Scale: NTS @ A3	Drawn:
Date:	

